



**GE Gemini
Compressor**

World's First Totally Natural Gas Powered CNG Compressor Package

Micro-Design, Inc. (MDi) offers a unique line of CNG compressor packages that are based on GE Gemini and Bauer compressors. They are driven by Cummins, Caterpillar or Subaru engines. All internal equipment is powered by engine batteries and built-in alternators. NO EXTERNAL ELECTRIC POWER IS NEEDED. MDi offers these packages for stationary installations and mobile trailer mounted units. All packages are offered with on board gas dryers and controls.

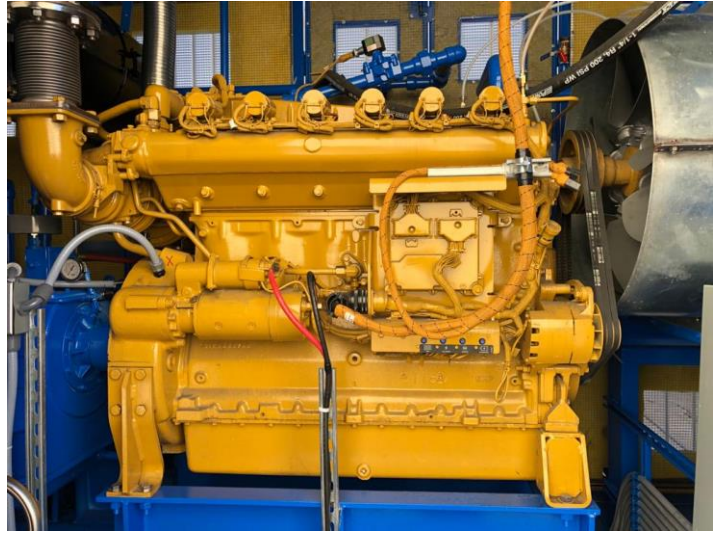
Micro-Design, Inc. (MDi) offers a complete line of standard CNG packages ready for use in any of your applications. We have small packages that will serve small CNG fleets ranging from 2 to 20 vehicles and larger packages that will serve 10 to 150 vehicles including transit buses, airport shuttle buses, garbage trucks, road sweepers, transports, etc. The heart of all medium to large packages is the high quality, industry proven GE Gemini compressor. It is a horizontal, balanced, opposed design that has been working out in the Oil and Gas industry for over 20 years, and has been employed in hundreds of CNG stations. MDi offers complete CNG station solutions using these versatile packages along with storage, valve panels, dispensers and state-of-the-art controls.

Standard Packages GE Gemini Compressors

Model	SCFM	HP	Discharge Pressure	Driver
CNG767 C22	20cfm	30HP	20 psi to 5000 psi	electric drive
MDI C-23.1	50cfm	40HP	20 psi to 5000psi	gas or electric
MDI GE M-302	125cfm	50HP	20 psi to 4500 psi	electric drive
MDI GE M-302	350cfm	100HP	300 psi to 4500 psi	electric drive
MDI GE H-302	320cfm	150HP	30 psi to 4500 psi	gas or electric
MDI GE H-302	700cfm	200HP	300 psi to 4500psi	gas or electric
MDI GE H-304	360cfm	200HP	30 psi to 4500psi	gas or electric
MDI GE H-304	750cfm	300HP	300 psi to 4500psi	gas or electric
MDI GE A-352	360cfm	200HP	30 psi to 4500psi	gas or electric
MDI GE A-354	1200cfm	400HP	60 psi to 4500psi	gas or electric

MDi's packages include Standard electric motors rated for C1D2 with soft start units shipped separately. Standard controls include 1 year of LevelCon web based service and ScadaPoint graphical interface. Sensors are provided for all pressure and temperature parameters including oil pressure, oil level, vibration, gas detection, etc.

Large GE Gemini based mobile trailer mounted units



Typical Parameters cng767:

Inlet pressure: 20 Psi to 3000 PSI
 Discharge pressure: 2600 PSI to 4200 PSI
 Capacity: 120 SCFM to 800 SCFM

Package Options – Engine or Motor Drive

Model	SCFM	Inlet
MDi76715.2	18 - 22	0-5 PSI
MDi767-4341	26 - 42	0-5 PSI
MDi767-4351	50 – 76	0-5 PSI

Small Bauer Compressor based mobile trailer mounted units



Typical Parameters:

Inlet pressure: 20 Psi to 3000 PSI
 Discharge pressure: 2600 PSI to 4200 PSI
 Capacity: 120 SCFM to 800 SCFM