



Backup skid


**Compressor**

## World's First Totally Natural Gas Powered Backup and CNG Compressor Package

SENA Corporation offers a unique line of backup Electric units with CNG compressor packages that are based on GE Gemini and Bauer compressors. They are driven by various engines. All internal equipment is powered by engine batteries and built-in alternators. NO EXTERNAL ELECTRIC POWER IS NEEDED. MDi offers these packages for stationary installations and mobile trailer mounted units. All packages are offered with on board gas storage and controls.

SENA Corporation offers a complete line of standard Backup Generators and CNG packages ready for use in any of your applications. We have small packages that will serve small backup and CNG fleets ranging from 2 to 20 vehicles and larger packages that will serve 10 to 150 vehicles including transit buses or beam pumps or any other motors, etc. that can be powered, airport shuttle buses, garbage trucks, road sweepers, transports, etc. All medium to large packages are assemble from high quality, backup units. The backup units and compressor that have been working out in the Oil and Gas industry for over 20 years and have been employed in hundreds of CNG stations. SENA offers complete Backup and CNG station solutions using these versatile packages along with storage, valve panels, dispensers and state-of-the-art controls.

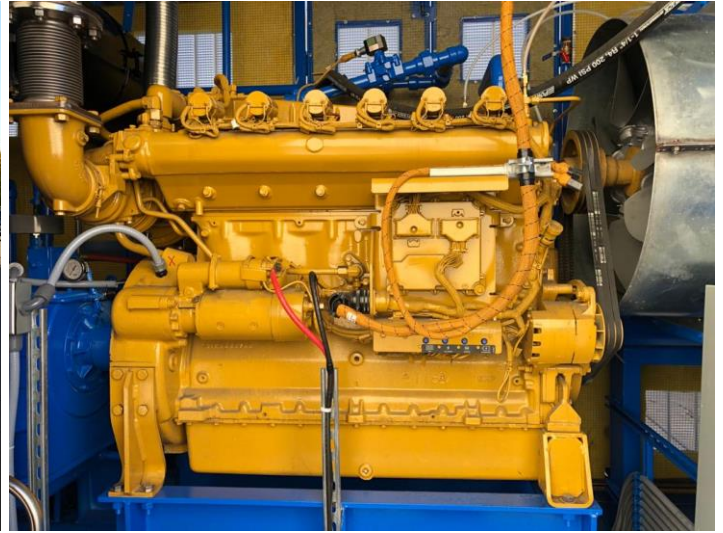
A small compressor package that has an inlet pressure of 0-10 PSI and discharge pressure of 4500 PSI Is used for backup CNG storage.

CNG767 C22      20cfm      30HP      20 psi to 5000 psi      electric drive

### Generator Features:

60HZ 480 VOLTS  
 STANDBY POWER APPLICATION  
 240 EKW W/FAN  
 G3406 TA 240 EKW 60HZ PGS  
 GENERAL EPG  
 ENGLISH LANGUAGE OPTION  
 ELECTRONIC MODULAR CONTROLS  
 CONTROL PANEL MOUNTING - RH  
 ENGLISH DISPLAY UNITS

CUSTOM REM. ANNUNCIATOR MODULE  
 JACKETWATER HEATER  
 RH POWER TERMINAL STRIP  
 500AMP 3-POLE CIRCUIT BREAKER  
 BATTERY CHARGER-10AMP DUALRATE  
 OVERSIZE BATTERY  
 ALARM MODULE - NFPA 9

**Large mobile trailer mounted units****Typical Parameters cng767:**

Inlet pressure: 0-10PSI

Discharge pressure: 4200 PSI

Capacity: 10-20 SCFM

**Small Compressor based mobile trailer mounted units**